

March 4, 2021



Steeple Views

FIRST PRESBYTERIAN CHURCH, MARTINSVILLE, VA

Pastor's Corner

Pastor Mark Hinchcliff

March 3, 2021

“Be joyful always; pray continually; give thanks in all circumstances, for this is God’s will for you in Christ Jesus.” 1 Thessalonians 5:16-18

Have you ever gone back to your old family home, long sold to a different family, and thought how much smaller everything looked from what you remembered? I had that experience twice! Once when the house was for sale, so it was easy to pose as a potential buyer and view the home without the current homeowners present. And once invited in just out of curiosity. During each visit my memories of when I lived there never seemed to have the impact, I hoped they would the second time around. For many people, me included, childhood memories are filled with happy or funny memories without the struggles we seem to forget. And for others, struggles forgotten may come back alive revisiting old haunts. But the experiences are never quite the same.

On one of my wife’s and my vacation outings, traveling up and down the East Coast New England area, we kept noticing mileage signs and advertisements for the famous Plymouth Rock. Talk about a “larger than life” image I had of that landing spot of the Pilgrims after that long journey to America. I can’t imagine the excitement after months on the ship, filled with treachery, finally stepping out on the solid ground in a new land. What was once a trip that questioned survival, now must have sparked feelings of hope, beauty, and grandeur. I could see the tears of joy as they fell to their knees and gave thanks to God. These were the images that history had planted in my mind that I expected to see as we approached the infamous site!

As we followed our GPS up and down the shoreline, we passed three times where our system said X Marks the Spot until we finally got out. We search in the dark until we came across, down in a hole, a four- or five-foot-long rock with a sign marking Plymouth Rock. Reading the plaque, it said, “Out of 102 who boarded the ship only 56 survived. A harsh winter to follow took the lives of many more and none would

have survived without the help of neighboring Native American tribes. This we now celebrate as the first Thanksgiving.”

It seems to me with all the death and hardships those first Pilgrims had experienced, looking back wouldn't have sparked those good memories of home. But maybe the Pilgrims found a way to mark this underwhelming rock landing place as a reminder to give thanks to God in this place they called home. Thankfulness is an attitude. It is a condition of the heart. What condition is your heart in today?

Blessings,

Pastor Mark

[View this email in your browser](#) • [Forward to a friend](#)



Third Sunday in Lent

Please join us on Sunday for the **Third Sunday in Lent**. We will be live on Facebook at 10:00 a.m.

sermon by Pastor Mark Hinchcliff.

God's Foolishness Is Wiser Than Human Wisdom

Based upon 1 Corinthians 1:18–25 and Exodus 20:1–17

Upcoming Events

Lenten Bible Study

February 17 - March 31

Earth Care

Save the date if you would like to help with property clean-up in the areas behind the church on **March 20**.

Lenten Bible Study

February 17 – March 31

7:00 p.m. via Zoom

Seven Marks for Church Vitality

PCUSA Missions Board - Matthew 25 Program

Lent is the period in the church year between Ash Wednesday and Easter, and most of us think of it as a time of personal introspection, spiritual reflection, and scriptural meditation centering on Jesus' life, death, and his ultimate resurrection. Our study this year will call us to prayerfully study scripture and examine what it means to be called to be Christ's Church. Just as God calls each of us to live an abundant life as a child of God, Jesus calls his church to live a vital life of service and discipleship. What does it mean to be a vital congregation? What would that look like? How would we go about increasing our vitality and discipleship? These are exactly the questions that will drive our study and form the background for exploring our mission as Christ's Body in this place and time.

God calls us together as a congregation, binds us together through the Holy Spirit, and sends us out into the world bearing the love and grace of Jesus Christ. You are a vital part of our church family and we need your presence with us as we join in study to discern God's call to FPCM today.

The study will start **Ash Wednesday, February 17, at 7:00 p.m. on Zoom**, and will be held every Wednesday evening at 7 through March 31. Look for your Zoom invite in your email in the coming week. May God bless us in this work.

Contact Monica Stevens at mlkstev@hotmail.com if you have further questions.



"After the Storms: Humanitarian Response in Times of Disaster"

Guatemala, because of its geographic location, is extremely vulnerable to natural disasters – earthquakes, volcanic eruptions, drought, hurricanes, floods, landslides. Last fall, while the people of Guatemala were dealing with the additional distress of a pandemic, Hurricanes Eta and Iota hit the Alta Verapaz department – taking lives, destroying roads, homes, and cropland, and displacing entire communities.



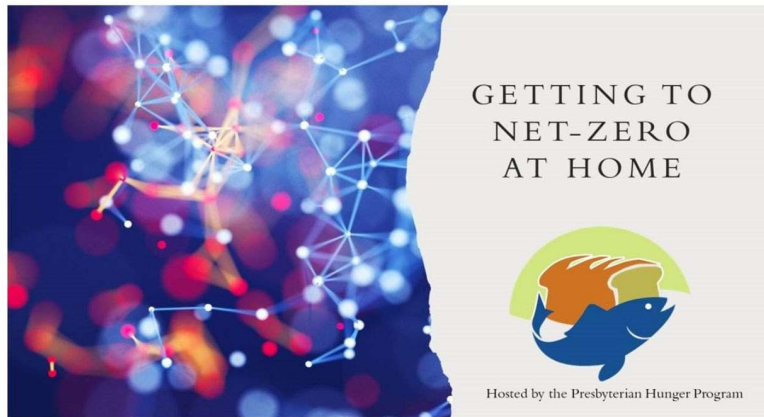
Hear about what CEDEPCA's Disaster Ministry is doing in terms of preparedness and response at **"After the Storms: Humanitarian Response in Times of Disaster,"** the next Virtual Journey to Guatemala on March 24 at 7:30 Eastern Time. Because a portion of the One Great Hour of Sharing offering goes directly toward CEDEPCA's disaster ministry in Guatemala, you will see firsthand the impact of your contribution. Speakers will include Francisco Reyna of CEDEPCA and Edwin Gonzalez-Castillo

of Presbyterian Disaster Assistance. The presentation, in English, will be a mix of music, breakout room interaction, videos, and live interviews, and will explore the larger theme of helping vulnerable populations without doing long-term harm.

Pre-registration is required at https://us02web.zoom.us/meeting/register/tZMuduqspjwrHdG2ZEgHJsIDDaX3_ENvqE9A.

A donation of \$11 is suggested for each participant. All are welcome.

After registering, you will receive a confirmation email about how to join the meeting



Join the Presbyterian Hunger Program on March 10th at 3:00p EDT for this webinar featuring Rev. Dr. Patricia Tull, an environmental theologian, A.B. Rhodes Professor Emerita of Hebrew Bible at Louisville Presbyterian Seminary, and author of *Inhabiting Eden*. Using her own net-zero home in Indiana as a model, Trisha will overview some of the promising ways homes can be built or renovated to become efficient enough to power not only themselves but family transportation and food production.

Join the Zoom meeting at <https://bit.ly/2NIGjFL>

For additional info and to join the webinar, click on the link below or copy into your web browser:

<https://peakspresbytery.us12.list-manage.com/track/click?u=263b557d18fbe7886211c6216&id=c23337c903&e=de7df1a93d>

Sunday School - Lenten Study

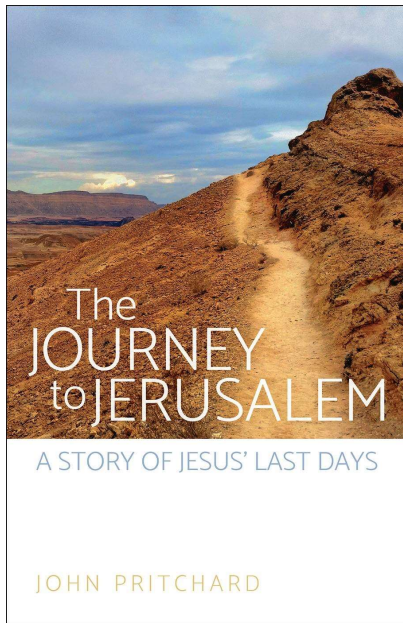
Begins: **February 21**

Meets at 9 am on Zoom (runs for seven Sundays).

From the publisher:

"In this imaginative retelling, John Pritchard explores the Gospel of Luke by looking through the eyes of the disciple John. *The Journey to Jerusalem* follows Luke's account from Luke 9:51, as Jesus "set his face to go to Jerusalem." Perfect for individual or group study, *The Journey to Jerusalem* provides weekday readings for Lent, from Ash Wednesday to Good Friday, along with a poem for each Saturday. Questions for reflection and discussion are also included."

The study will begin this Sunday (Feb 21) at 9 AM by Zoom and run for seven



Sundays.

For more information, contact Denny Casey,
d.a.casey@comcast.net.

Youth Ministry

The youth will be doing a **Lenten** study beginning **Sunday, Feb. 21** that will mirror the Wednesday evening adult study on the *Seven Marks for Congregational Vitality*. We'll think about what it means to be a vital congregation and ways to increase our vitality by exploring scripture & questions to reflect on what it means to be The Church.

We will continue meeting

Sunday afternoons at 12 pm, still on **Zoom**.

If your middle or high school child would like to join us, please contact Sam at sam@peakspresbytery.org for an invite link to the Zoom meeting.



Margaret Mead famously said, *"Never doubt that a small group of thoughtful, committed citizens can change the world."*

Earth Care "Won't You Be My Neighbor Day"

March 20, 9 am - Any day can be a beautiful day in the neighborhood – and "Won't You Be My Neighbor Day" is no exception! "Won't You Be My Neighbor Day" is a day to remember and honor

Fred Rogers, Presbyterian minister and children's TV host of "Mr. Roger's Neighborhood". **Meet at the church at 9 am** to help clean up the stream behind the church building and other neighborly things.

The PCUSA website for Earth Care Congregations is:

<https://www.presbyterianmission.org/ministries/environment/earth-care-congregations/>

Denny Casey has remarked that the website is "like peeling an onion." But be not overwhelmed, just go poke around a bit to see how seriously Presbyterians are taking this idea of caring for our Earthly home.

Technology Corner

There have been some reports of emails from "RITA BATEMAN" going to junk mail folder.

Members should check their junk mail folders and add emails from RITA to the safe senders list: here's how the email sender appears:

RITA BATEMAN mail@icnsend.com

If there are emails in your junk mail folder, you should select:

1. "never block sender"
 2. "never block sender's domain" and
 3. "never block this group or mailing list"
-



Congratulations to Patrick and Brannon Edgerton on the birth of their son, **Paul Louis Edgerton**, on February 5, 2021 weighing 7 lbs 10 oz.

Cindy and Steve Edgerton are the proud grandparents. Great grandparents are Virginia and Mervyn King.

Our Deepest Sympathy

Condolences to the family of Donald Lambert, Jr., former son-in-law of Dwight and Pat Christenbury, who died Saturday, February 27, 2021 in Glen Allen, Virginia.

The full obituary can be found at the address below:

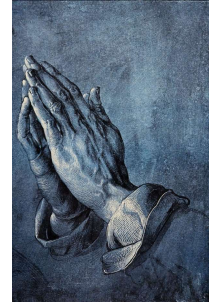
Prayer Requests

These members and friends of the congregation need our prayers:

PRAYER CONCERNS

Family of Donald Lambert, Jr., Ken Beavers (Pastor Mark's nephew), Carl and Georgette Bishop, Ernest and Marilyn Bremner (S. Ford), Jim Brunt (N. Davis' brother), Laura Buffkin, Tommy Cobb (M. Dunn), Sandra and Mark Dobrinski (brother and sister in-law of Cynthia), Daniel Handy, Betty Carol Lamm, Eddie Levi, Mary Manning, Laura Stevens Milton, Jim Murray (Judy King), Regenia Noel (M. Stevens), Anne Peterson, Gene and Betty Stanley, Tammy Tucker Wardinski (Susan Pilson), persecuted Christians and all troops in defense of freedom throughout the world.

Please submit prayer requests to Rita in the church office, (276) 632-3431, office@fpcmartinsvilleVA.org.



Please remember

Canned Soup



The new food item for First Presbyterian Church for the 1st quarter is **canned soup**. Please consider donating extra when you are able to get out and about as your donations will become more important than ever.

Hygiene Items - We are always in need of these items!

**Items may be brought to church but please call the office to make sure Rita is there. Alternatively, you may drop off at Grace Network, Monday - Friday, 9-2 PM*

For updates and announcements, please click on the link below or copy and paste into your web browser:



https://www.peakspresbytery.org/images/2020_Peaks_Postings/PP_Aug18_2020.pdf

Our Mission

Share God's Love, Embrace Our Neighbors, Nurture Each Other

Printed copies of *Steeple Views* are available at church. Current and back issues are also on our website:

www.firstpresbyterianmartinsville.org/page.cfm/topic/newsletter

Useful Links

FPC website:

www.firstpresbyterianmartinsville.org/ or www.fpcmartinsvilleVA.org/

FPC online directory: members.instantchurchdirectory.com/

FPC Facebook page: www.facebook.com/FPCMartinsvilleVA

Presbytery of the Peaks: www.peakspresbytery.org/

Presbyterian Church (USA): www.pcusa.org/

Daily Bible Readings: www.presbyterianmission.org/devotion/daily/

Steeple Views is published. **DEADLINE** for submission of articles is Tuesday evening. We reserve the right to edit all submissions. Sharon Kirby, Editor
steeplevIEWS@fpcmartinsvilleVA.org

Church Office Phone: 276-632-3431

Our mailing address is:

First Presbyterian Church
1901 Patrick Henry Ave.
Martinsville, VA 24112

STAFF

Rev. Mark Hinchcliff, Pastor, pastor@fpcmartinsvilleVA.org

Sam Smith, Youth and Family Ministries Director, sam@peakspresbytery.org

Cynthia Dobrinski, Music Director & Organist, 276-734-0212

Rita Bateman, Secretary/Office Manager, office@fpcmartinsvilleVA.org

Drema Austin, Bookkeeper, bookkeeper@fpcmartinsvilleVA.org

Carol Carter, Weekday School Director, wds@fpcmartinsvilleVA.org

Deborah Burgess, Contemporary Music Director,
contemporarymusic@fpcmartinsvilleVA.org

THE SESSION

Moderator: Rev. Mark Hinchcliff

Clerk: Nancy Baker

Treasurer: Henry Moore

Class of 2021

Lynn Pritchett: Congregational Care and Fellowship

Rob King: Facilities

Monica Stevens: Worship

Class of 2022

Brooke Cundiff: Mission/Outreach

Pamela Rakes: Stewardship and Communication

Betty Hudson: Christian Education

Class of 2023

Billy Kirby: Administration

TRUSTEES

2021: David Garland, Ed Linker

2022: Joan Montgomery, Ashby Pritchett

2023: Sandra Ford, Joe DeVault

Copyright © 2021 First Presbyterian Church, Martinsville, VA, All rights reserved.

Want to change how you receive these emails?

You can [update your preferences](#) or [unsubscribe from this list](#)

